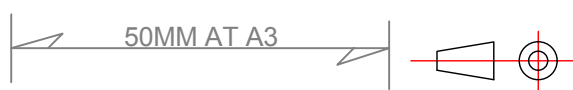
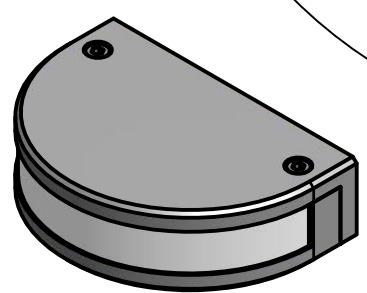
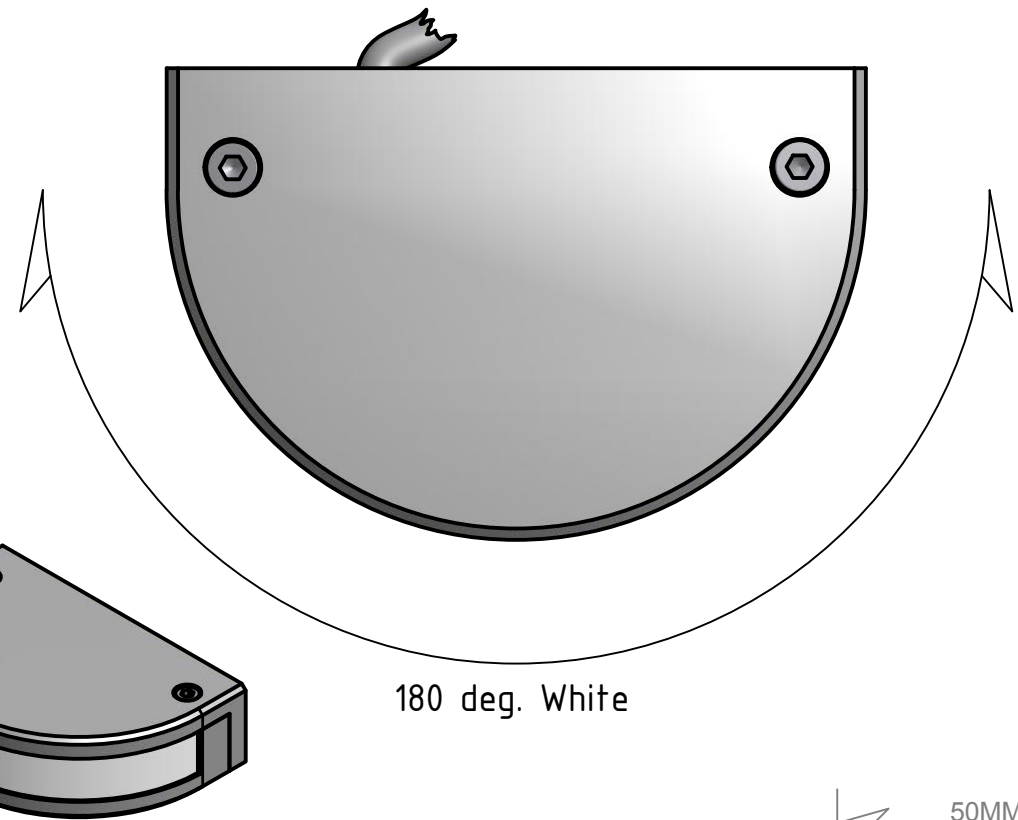
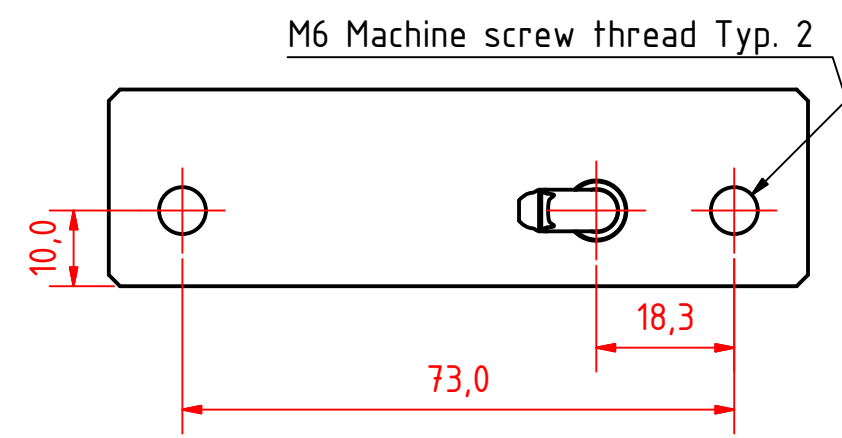
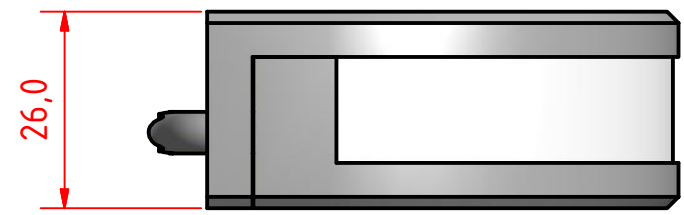
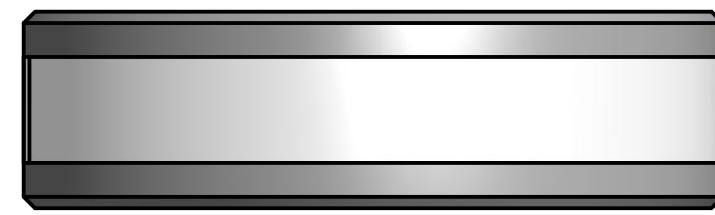
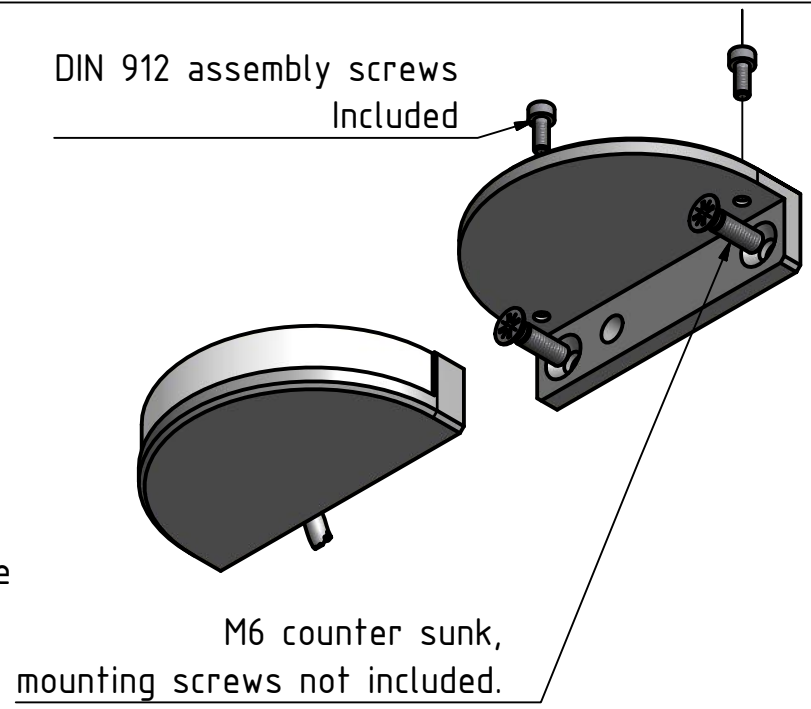


Mounting Instructions:

- Remove the two DIN 912 screws on the top side of the assembly, thus releasing the navigation light from its mounting bracket.
- Drill the holes for the machine screws and the cable as shown on the measurments. Thread the screw mounting holes if applicable to the specific situation.
- Mount the mounting bracket onto the super structure using two 6m countersunk machine screws. Make sure that the surface is flat and vertical.
- Resassemble the Navigation light



| | | | |
|--|------------------------------|--------------------|-------------------|
| 200-024 180 degree White, 2 Nautical Mile | | | |
| DRAWING NO.: 200-024 | REV. NO.: 0 | SIZE: A3 | DRAWN BY: Paul |
| SCALE: 1:1 | TOLERANCES: DS/ISO 2768-f | REVIEWED BY: JM | |
| MATERIAL DESCRIPTION: Anodized Aluminium & Acrylic Glass | | | |
| <small>This Drawing, and the information within, is the property of Lopolight ApS and may not be used in any form without express permission there from. Lopolight reserves the right to change this drawing and assumes no liability for the information communicated herein. Use of dimensions and other information in this drawing is at the users own risk.</small> | | | |

LOPOLIGHT

Lopolight ApS
Ved Klaedebo 12
DK-2970, Hoersholm
Denmark

Tel: (+45) 32 48 50 30 Fax: (+45) 32 48 50 32
info@lopolight.com

www.lopolight.com