

Mounting Hole
M6x1 - 10,0mm DEEP

300-136, Masthead light 6 nm for vessels
over 50 meter, 400-034 Promount, Cable
Down.

DRAWING NO.:	REV. NO.:	SIZE:	DRAWN BY:
300-136 AB	0	A3	Sergio
SCALE:	TOLERANCES:	REVIEWED BY:	CREATION DATE:
1:1	DS/ISO 2768-f		29-03-2017
MATERIAL DESCRIPTION: Alu EN 6082, Acrylic.			
(20µ) Silver anodized according to EN ISO 7599 (50µ) Black anodized according to MIL-A 8625F			

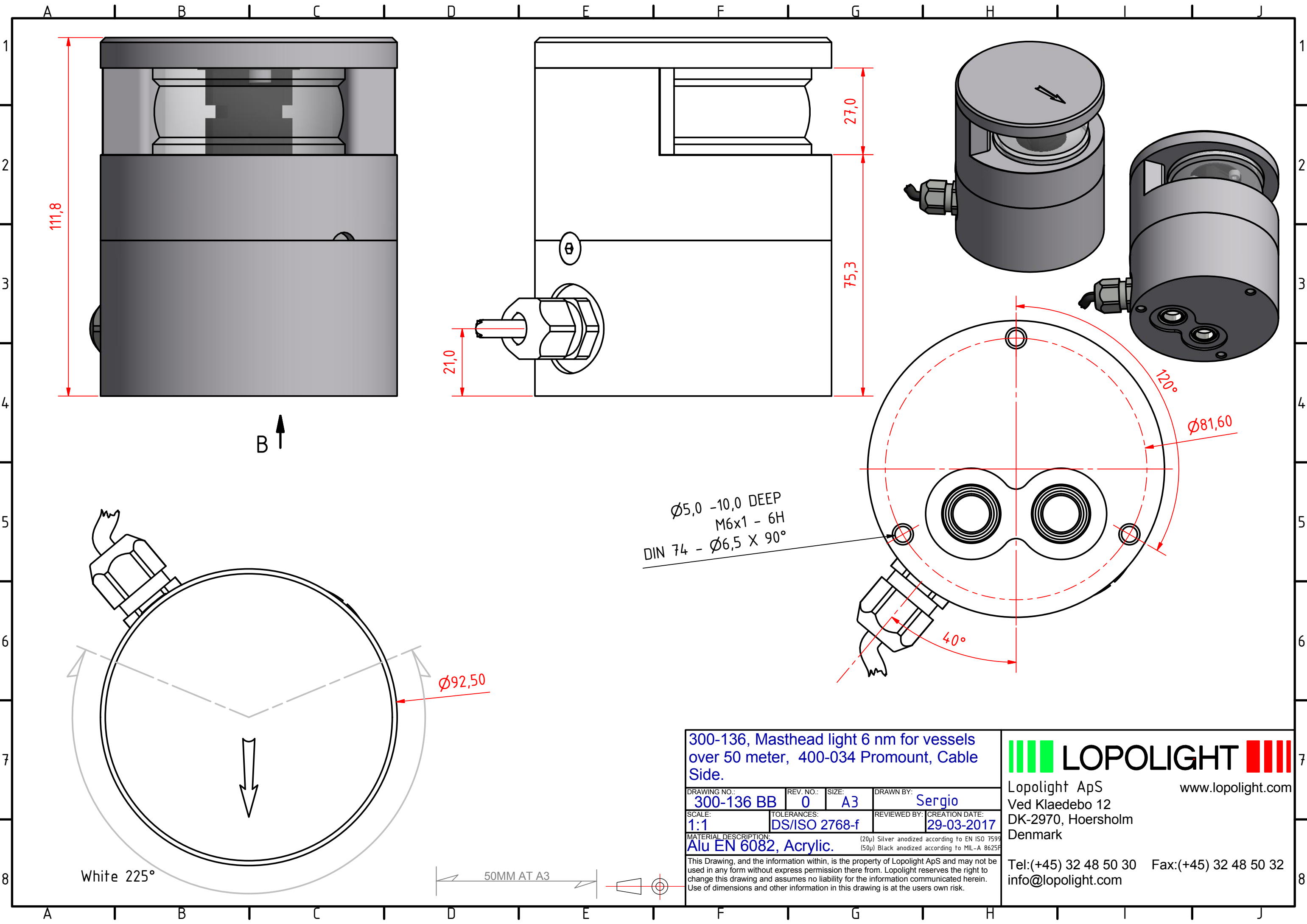
This Drawing, and the information within, is the property of Lopolight ApS and may not be used in any form without express permission there from. Lopolight reserves the right to change this drawing and assumes no liability for the information communicated herein. Use of dimensions and other information in this drawing is at the users own risk.

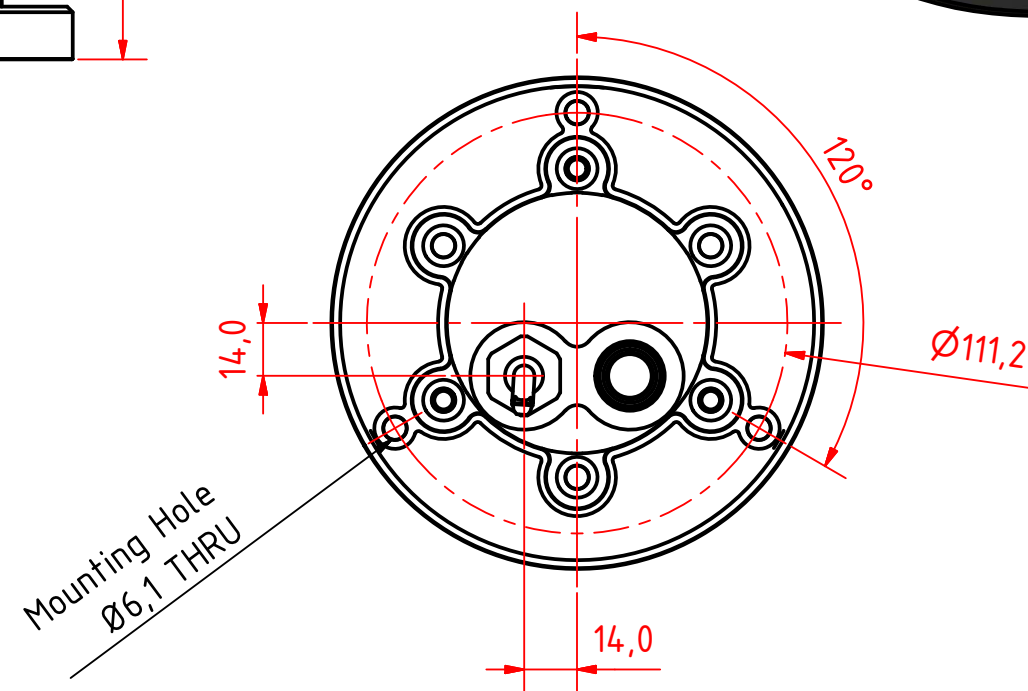
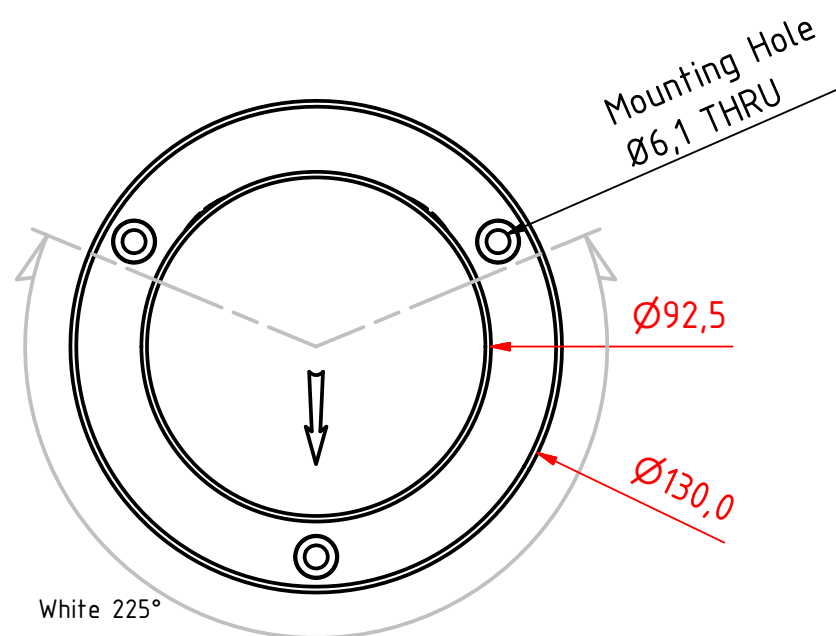
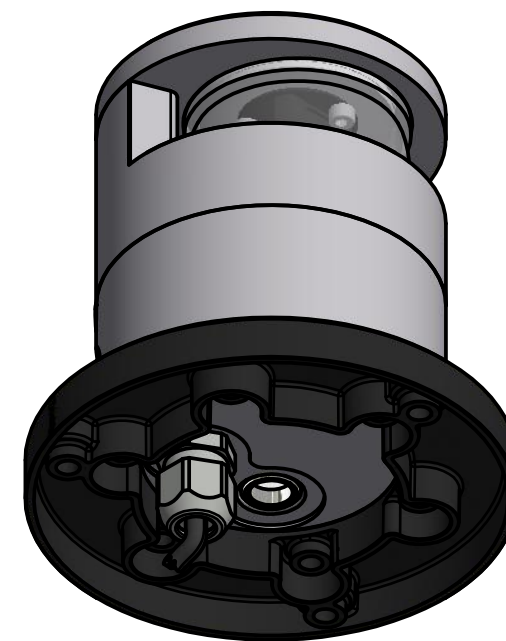
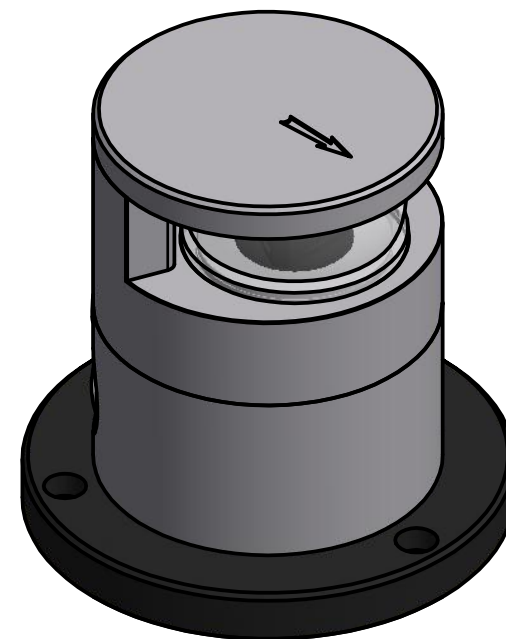
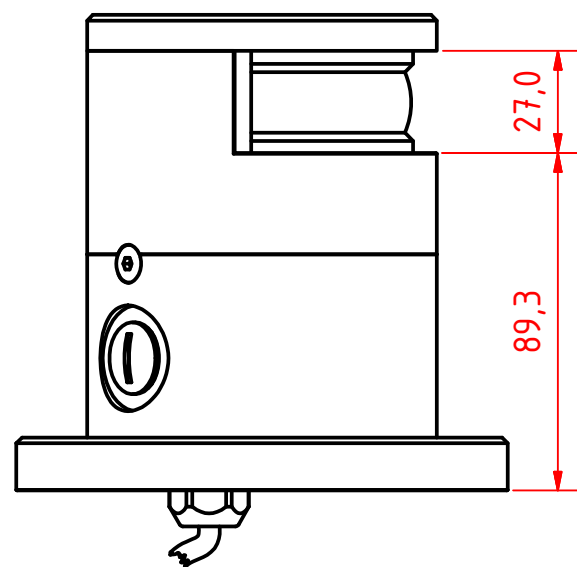
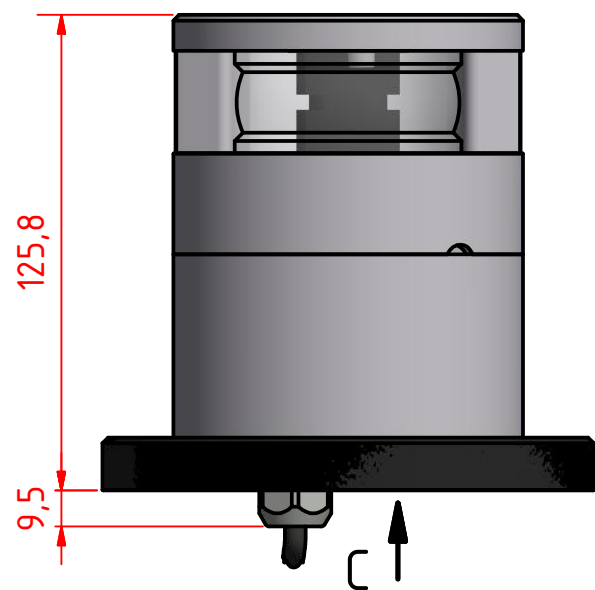


Lopolight ApS
Ved Klaedebo 12
DK-2970, Hoersholm
Denmark

www.lopolight.com

Tel:(+45) 32 48 50 30 Fax:(+45) 32 48 50 32
info@lopolight.com





300-136, Masthead light 6 nm for vessels
over 50 meter, 400-034 Promount, 400-404
PE Base Plate, Cable Down.

DRAWING NO.: 300-136 CB	REV. NO.: 0	SIZE: A3	DRAWN BY: Sergio
SCALE: 1:2	TOLERANCES: DS/ISO 2768-f	REVIEWED BY:	CREATION DATE: 29-03-2017

MATERIAL DESCRIPTION:
Alu EN 6082, Acrylic, PE (20µ) Silver anodized according to EN ISO 7599
(50µ) Black anodized according to MIL-A 8625F

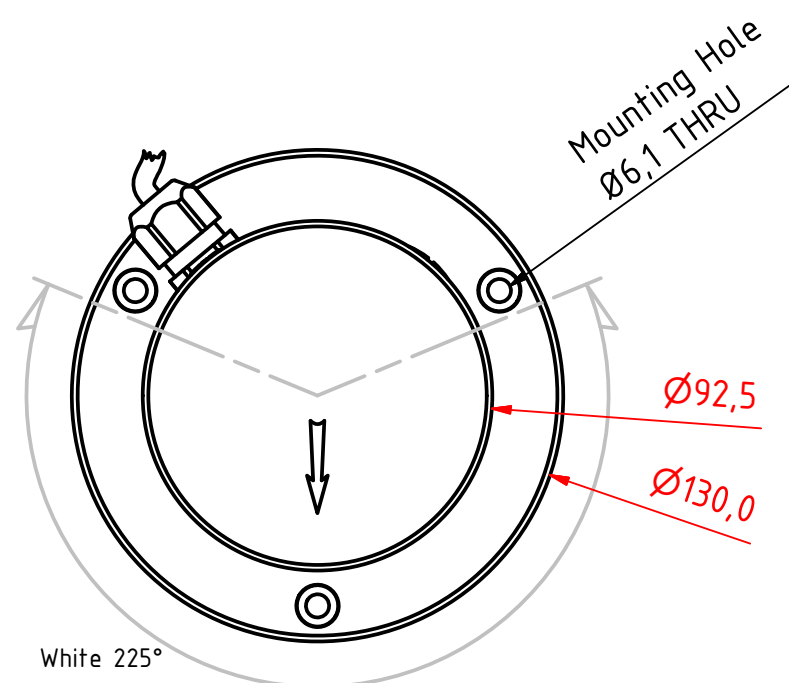
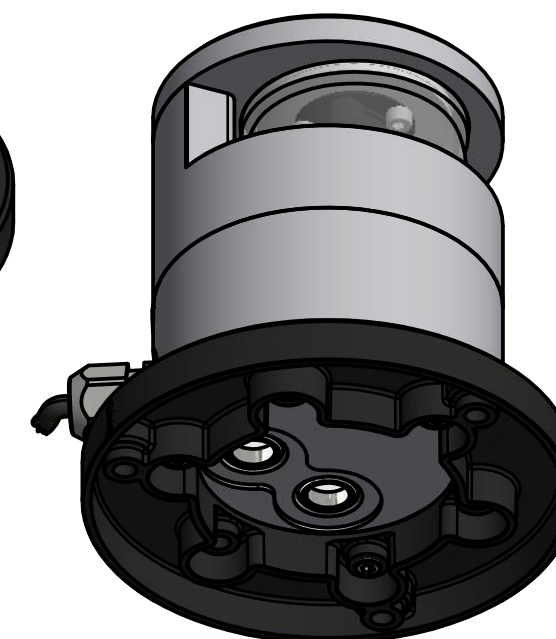
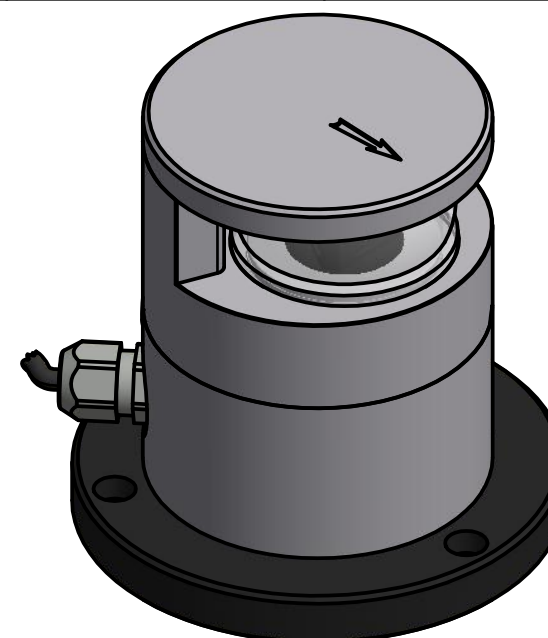
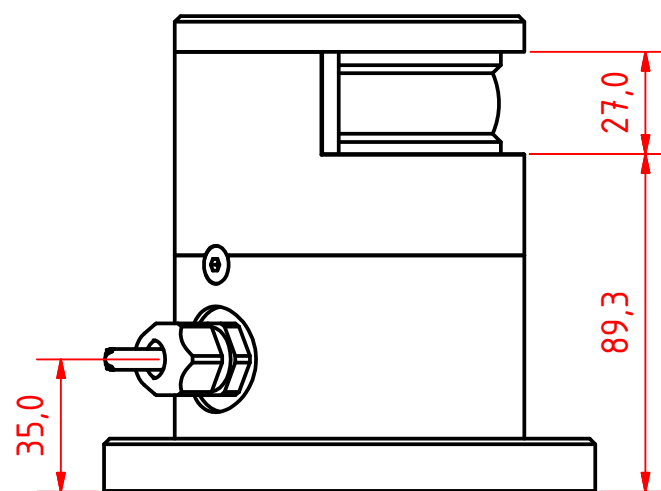
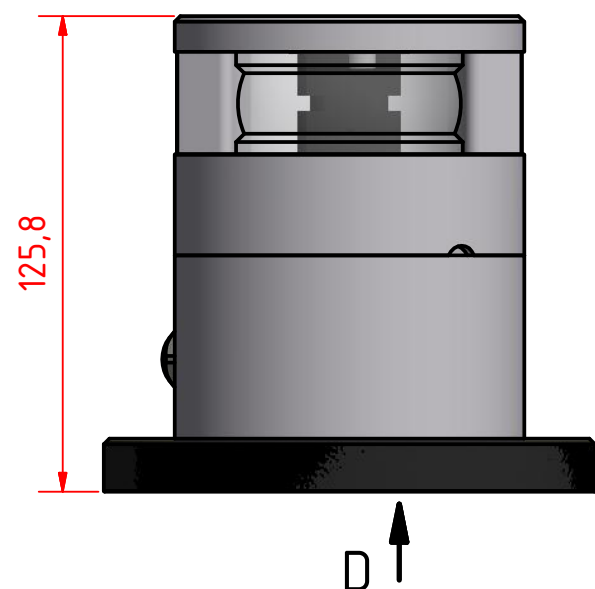
This Drawing, and the information within, is the property of Lopolight ApS and may not be used in any form without express permission there from. Lopolight reserves the right to change this drawing and assumes no liability for the information communicated herein. Use of dimensions and other information in this drawing is at the users own risk.

LOPOLIGHT

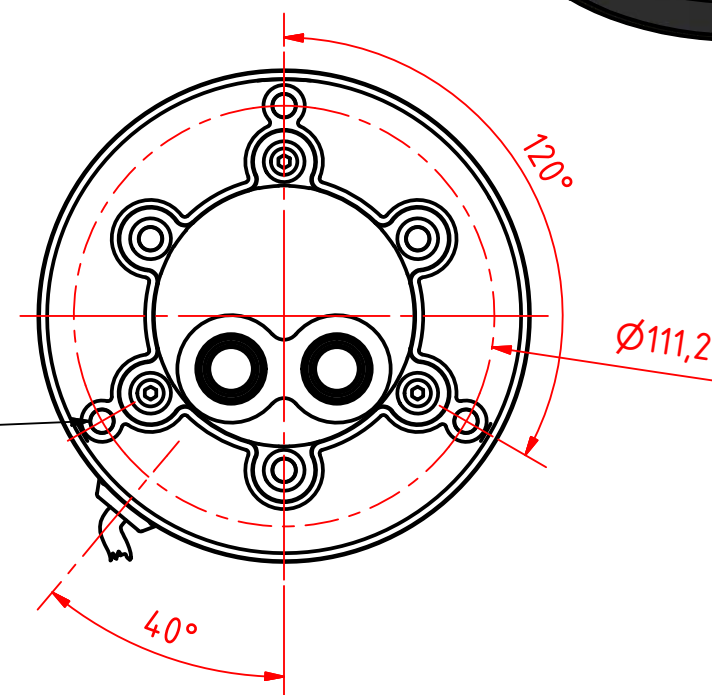
Lopolight ApS
Ved Klaedebo 12
DK-2970, Hoersholm
Denmark

Tel: (+45) 32 48 50 30 Fax: (+45) 32 48 50 32
info@lopolight.com





Mounting Hole
Ø6,1 THRU



300-136, Masthead light 6 nm for vessels
over 50 meter, 400-034 Promount, 400-404
PE Base Plate, Cable Side.

DRAWING NO.: 300-136 DB	REV. NO.: 0	SIZE: A3	DRAWN BY: Sergio
SCALE: 1:1	TOLERANCES: DS/ISO 2768-f	REVIEWED BY:	CREATION DATE: 29-03-2017

MATERIAL DESCRIPTION:
Alu EN 6082, Acrylic, PE (20µ) Silver anodized according to EN ISO 7599
(50µ) Black anodized according to MIL-A 8625F

This Drawing, and the information within, is the property of Lopolight ApS and may not be used in any form without express permission there from. Lopolight reserves the right to change this drawing and assumes no liability for the information communicated herein. Use of dimensions and other information in this drawing is at the users own risk.

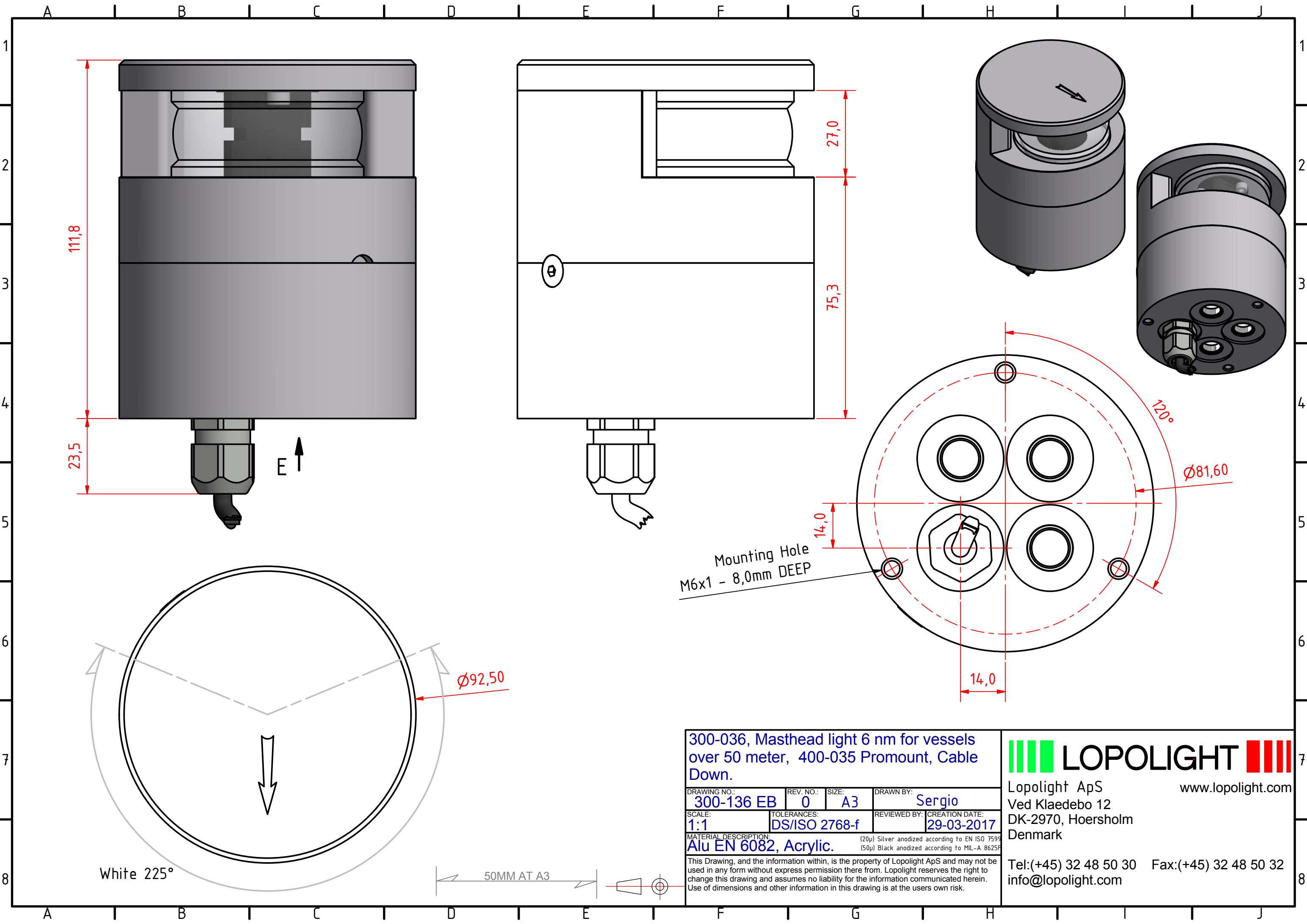
LOPOLIGHT

Lopolight ApS
Ved Klaedebo 12
DK-2970, Hoersholm
Denmark

www.lopolight.com

Tel: (+45) 32 48 50 30 Fax: (+45) 32 48 50 32
info@lopolight.com





300-036, Masthead light 6 nm for vessels
over 50 meter, 400-035 Promount, Cable
Down.

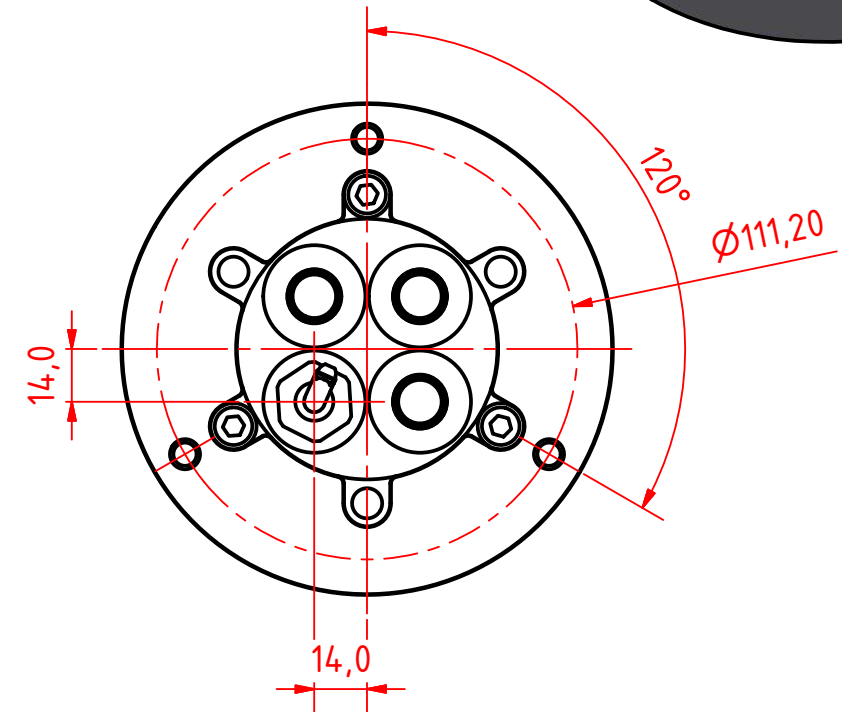
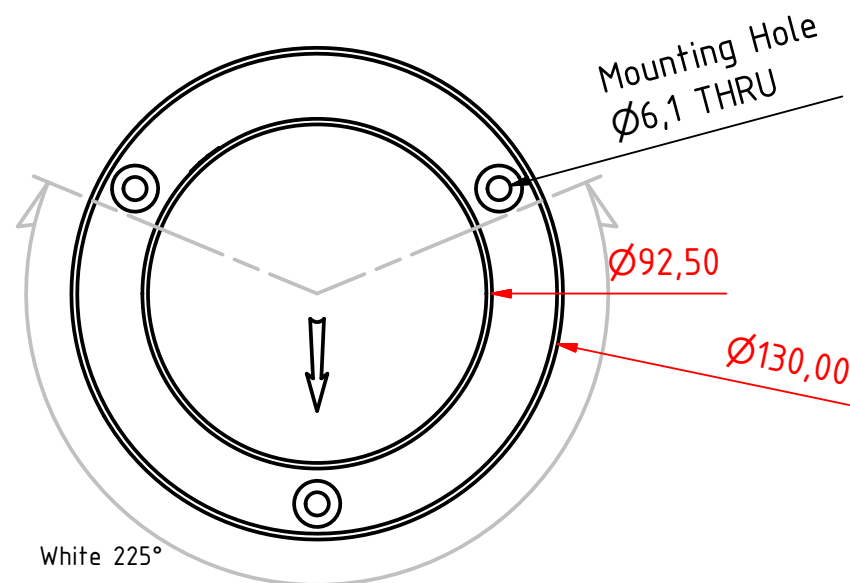
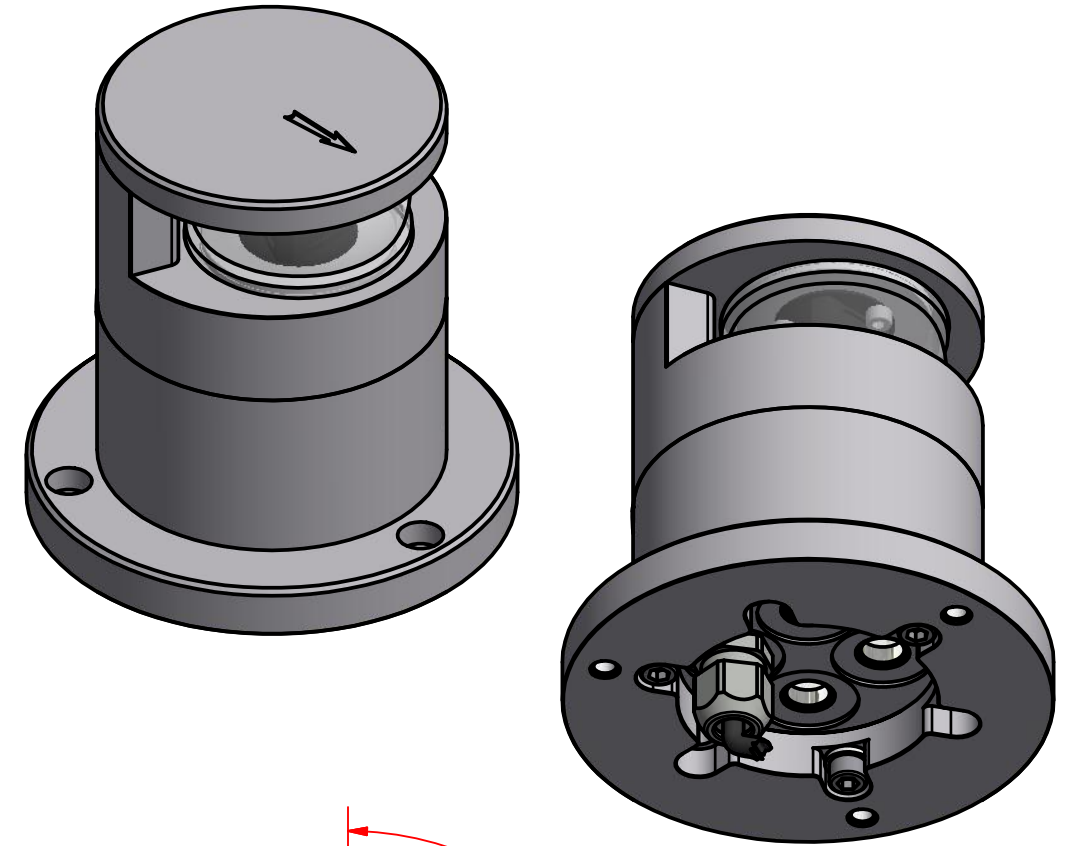
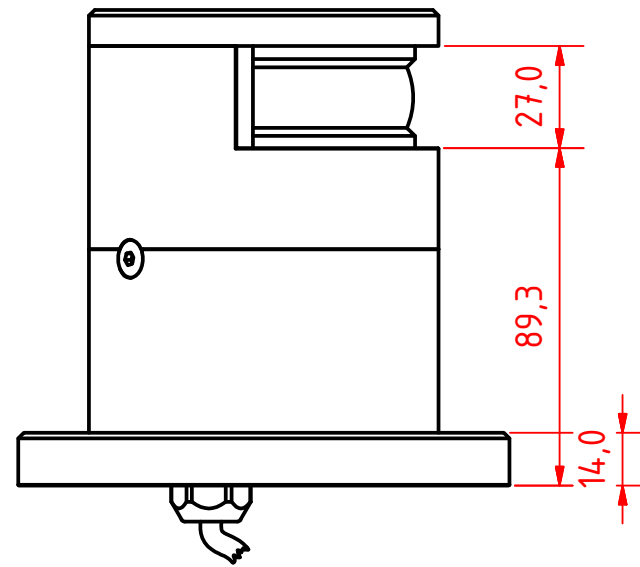
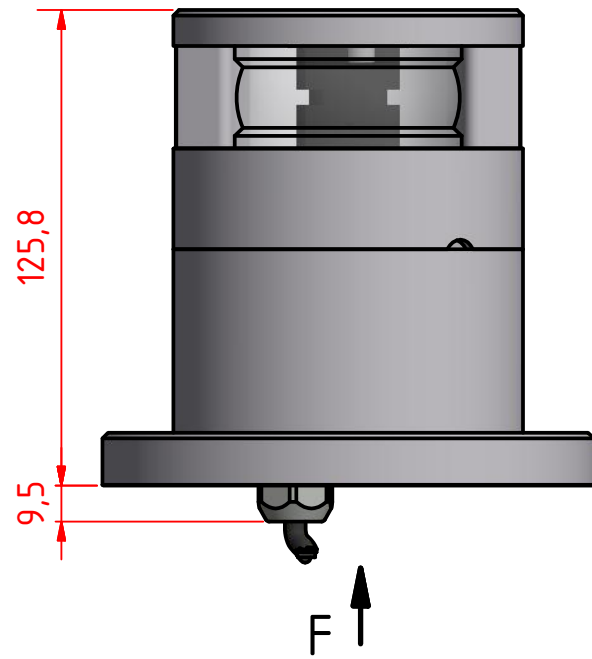
DRAWING NO.:	REV. NO.:	SIZE:	DRAWN BY:
300-136 EB	0	A3	Sergio
SCALE:	TOLERANCES:	REVIEWED BY:	CREATION DATE:
1:1	DS/ISO 2768-f		29-03-2017
MATERIAL DESCRIPTION:			
Alu EN 6082, Acrylic.			
(20µ) Silver anodized according to EN ISO 7599			
(50µ) Black anodized according to MIL-A 8625F			

This Drawing, and the information within, is the property of Lopolight ApS and may not be
used in any form without express permission there from. Lopolight reserves the right to
change this drawing and assumes no liability for the information communicated herein.
Use of dimensions and other information in this drawing is at the users own risk.



Lopolight ApS
Ved Klaedebo 12
DK-2970, Hoersholm
Denmark

Tel:(+45) 32 48 50 30 Fax:(+45) 32 48 50 32
info@lopolight.com



**300-136, Masthead light 6 nm for vessels
over 50 meter, 400-035 Promount, 400-401
Alu Base Plate, Cable Down.**

DRAWING NO.: 300-136 FB	REV. NO.: 0	SIZE: A3	DRAWN BY: Sergio
SCALE: 1:2	TOLERANCES: DS/ISO 2768-f	REVIEWED BY:	CREATION DATE: 29-03-2017

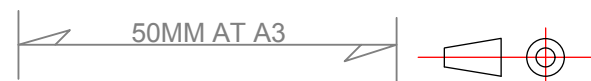
Alu EN 6082, Acrylic. (20µ) Silver anodized according to EN ISO 7599
(50µ) Black anodized according to MIL-A 8625F

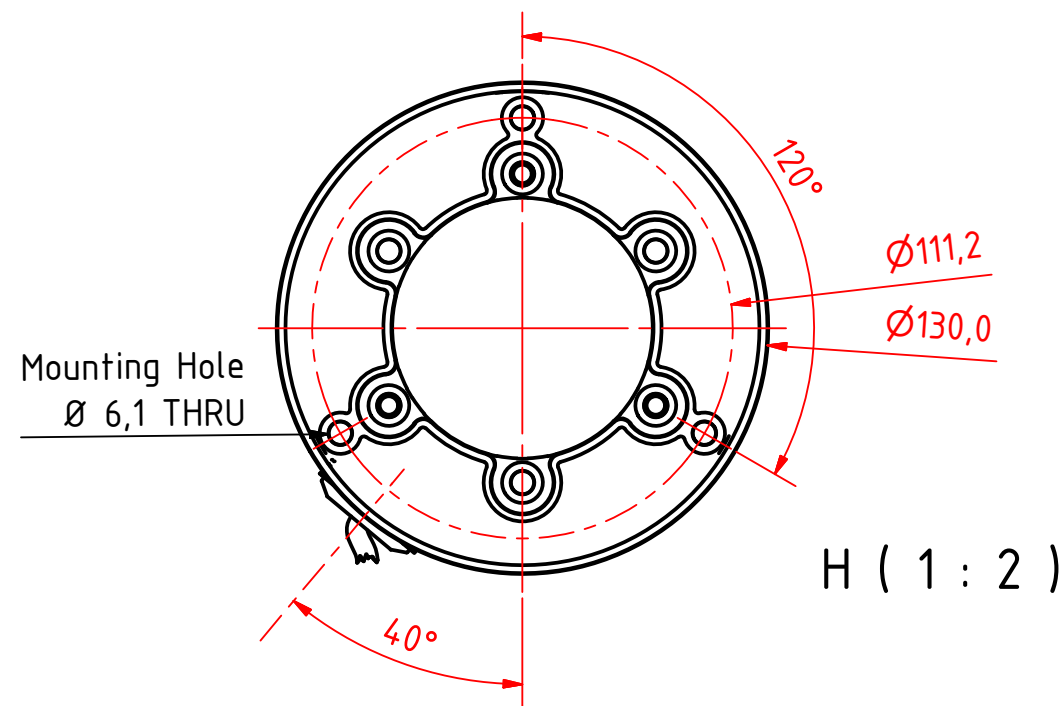
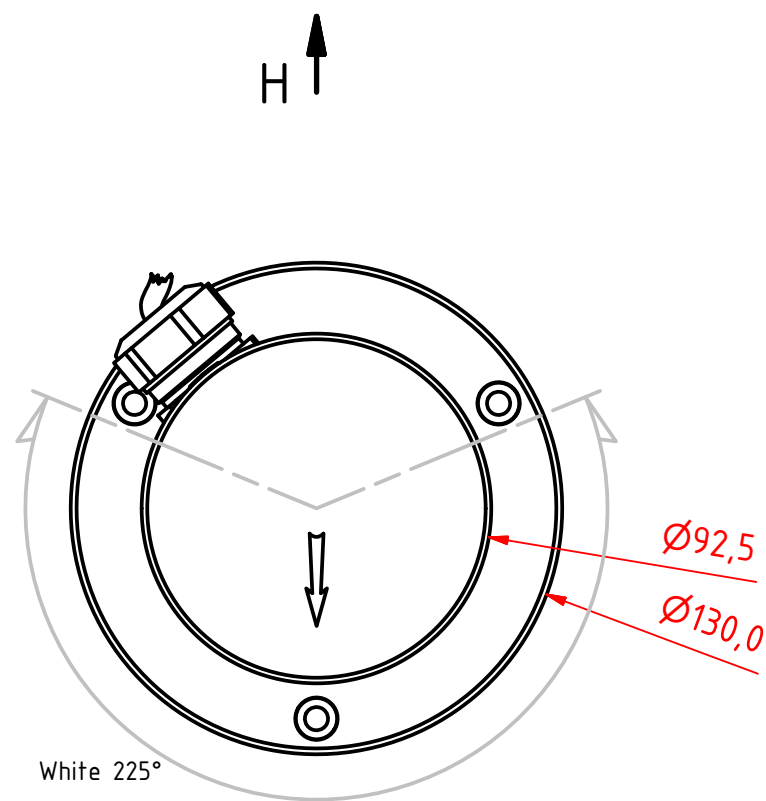
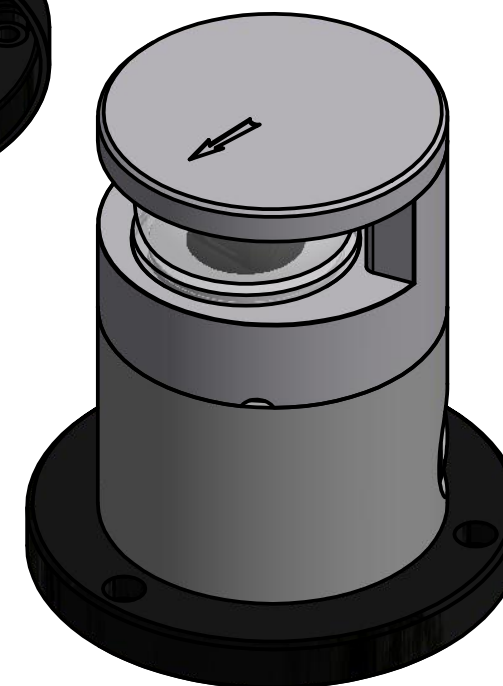
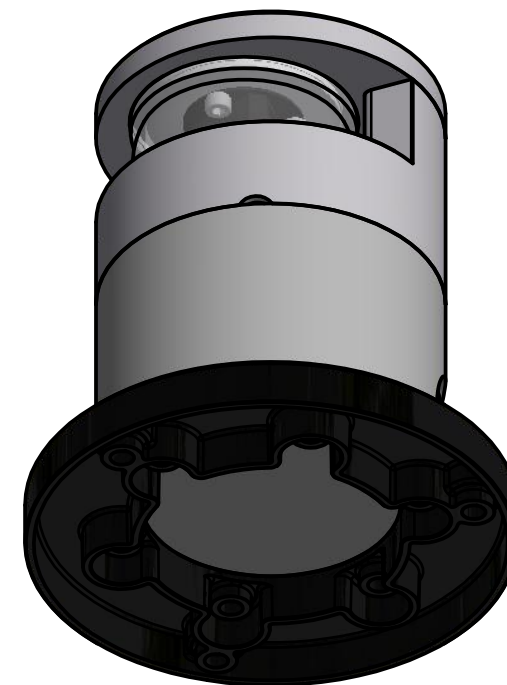
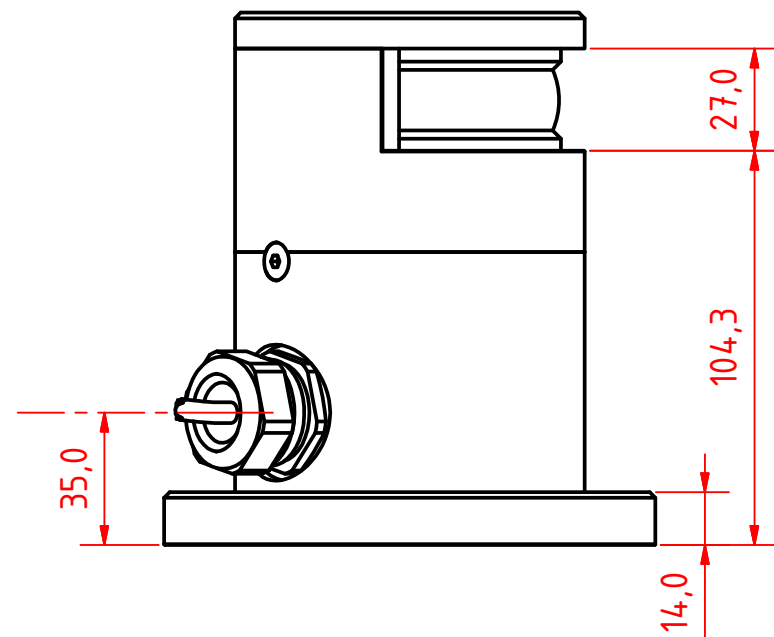
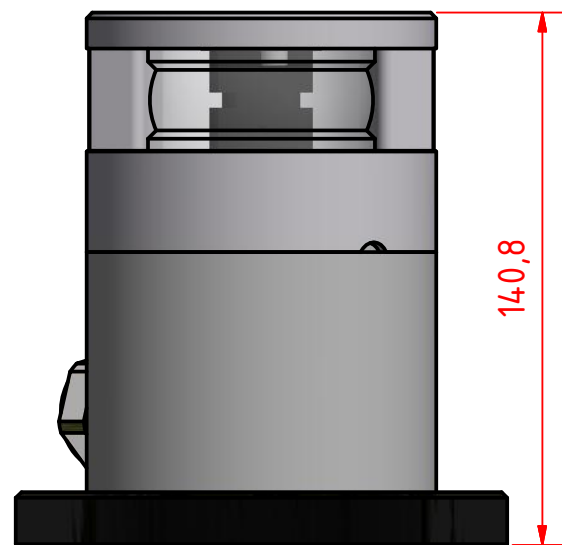
This Drawing, and the information within, is the property of Lopolight ApS and may not be used in any form without express permission there from. Lopolight reserves the right to change this drawing and assumes no liability for the information communicated herein. Use of dimensions and other information in this drawing is at the users own risk.

LOPOLIGHT

Lopolight ApS
Ved Klaedebo 12
DK-2970, Hoersholm
Denmark

Tel:(+45) 32 48 50 30 Fax:(+45) 32 48 50 32
info@lopolight.com





300-136, Masthead light 6 nm for vessels
over 50 meter, PRO-Series Promount, PE
Base Plate, Cable Side.

DRAWING NO.:	REV. NO.:	SIZE:	DRAWN BY:
300-136GB	0	A3	Sergio
SCALE:	TOLERANCES:	REVIEWED BY:	CREATION DATE:
1:2	DS/ISO 2768-f		29-03-2017
MATERIAL DESCRIPTION:			
Alu EN 6082, Acrylic			

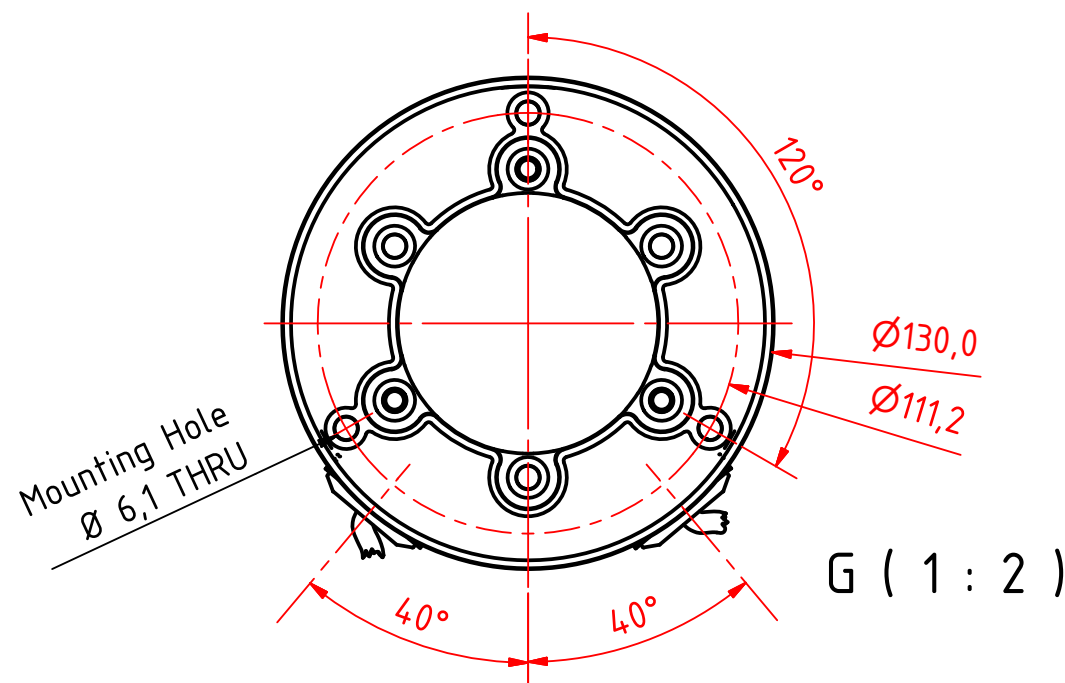
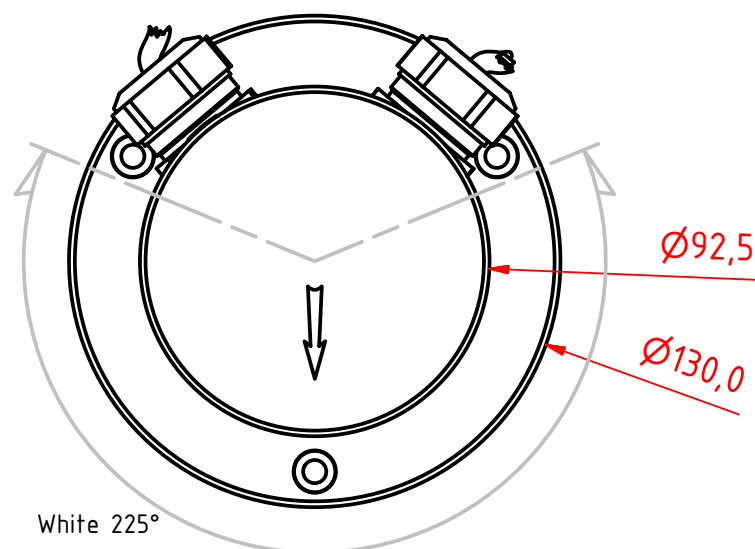
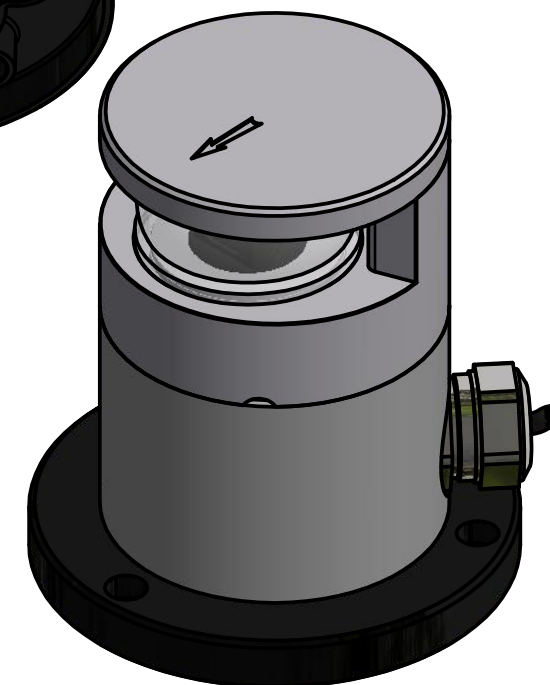
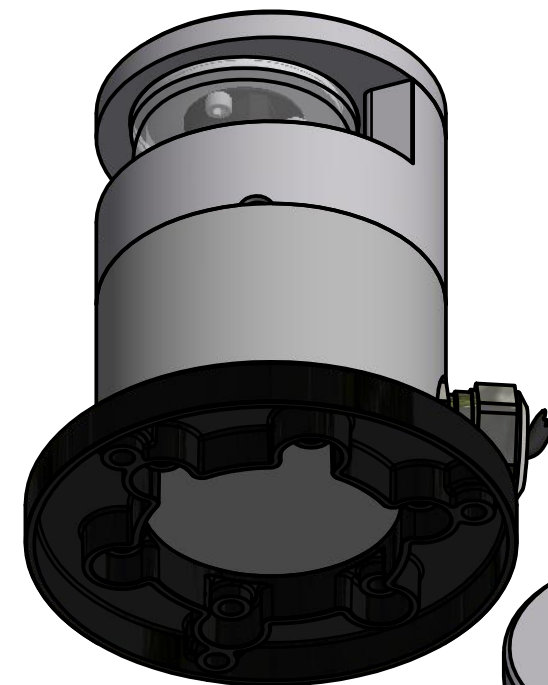
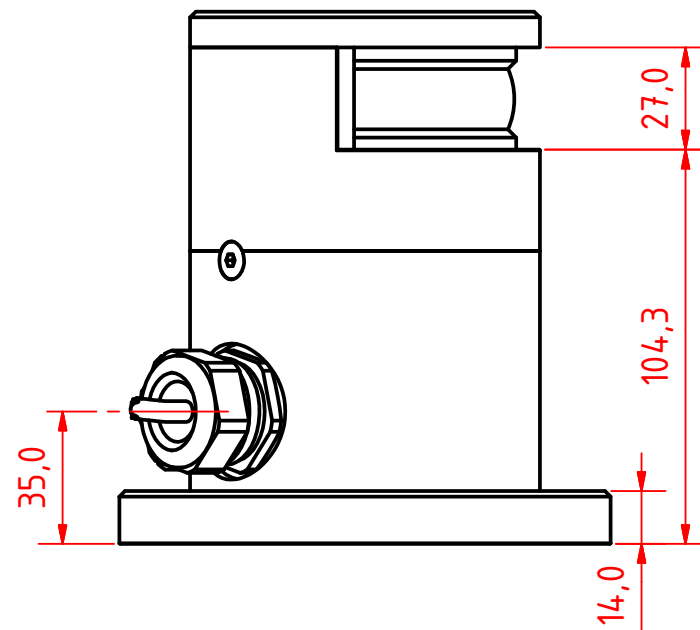
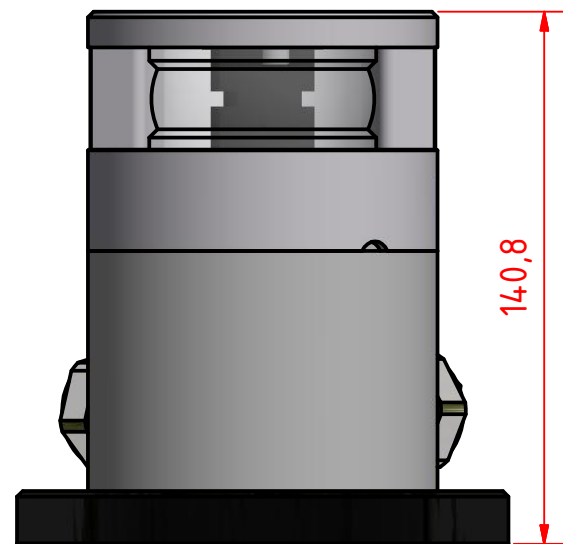
(20µ) Silver anodized according to EN ISO 7599
(50µ) Black anodized according to MIL-A 8625F
This Drawing, and the information within, is the property of Lopolight ApS and may not be
used in any form without express permission there from. Lopolight reserves the right to
change this drawing and assumes no liability for the information communicated herein.
Use of dimensions and other information in this drawing is at the users own risk.

LOPOLIGHT

Lopolight ApS
Ved Klaedebo 12
DK-2970, Hoersholm
Denmark

Tel: (+45) 32 48 50 30 Fax: (+45) 32 48 50 32
info@lopolight.com





300-136, Masthead light 6 nm for vessels
over 50 meter, PRO-Series Promount, PE
Base Plate, 2 Cable Side.

DRAWING NO.: 300-136HB	REV. NO.: 0	SIZE: A3	DRAWN BY: Sergio
SCALE: 1:2	TOLERANCES: DS/ISO 2768-f	REVIEWED BY:	CREATION DATE: 29-03-2017
MATERIAL DESCRIPTION: Alu EN 6082, Acrylic. <small>(20µ) Silver anodized according to EN ISO 7599 (50µ) Black anodized according to MIL-A 8625F</small>			

This Drawing, and the information within, is the property of Lopolight ApS and may not be used in any form without express permission there from. Lopolight reserves the right to change this drawing and assumes no liability for the information communicated herein. Use of dimensions and other information in this drawing is at the users own risk.

LOPOLIGHT

Lopolight ApS
Ved Klaedebo 12
DK-2970, Hoersholm
Denmark

Tel: (+45) 32 48 50 30 Fax: (+45) 32 48 50 32
info@lopolight.com

